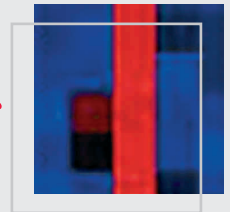


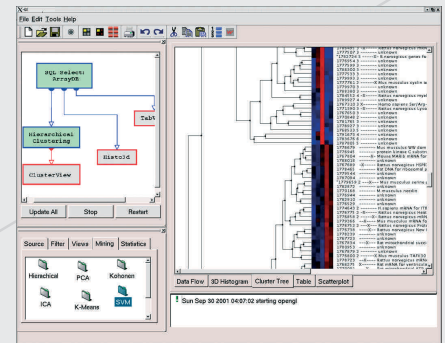
BioMiner



Data Mining, Data Integration and Visualisation

BioMiner is a universal modular bioinformatics platform for data mining and data integration. BioMiner incorporates and analyses heterogeneous data from various high throughput experiments (e.g., biochips, 2D-gels and MALDI experiments) and from different data bases. The platform combines a large function range with a radically simplified graphic interface to enable even non-specialists to successfully solve complex data mining tasks.

BioMiner supports integration of heterogeneous data from various public and proprietary sources. The platform's advanced mining tools detect new connections and relations that significantly increase the economic value of the data. The user-friendly platform design permits scientists with different backgrounds to carry out data analyses and makes training of expensive specialists unnecessary.

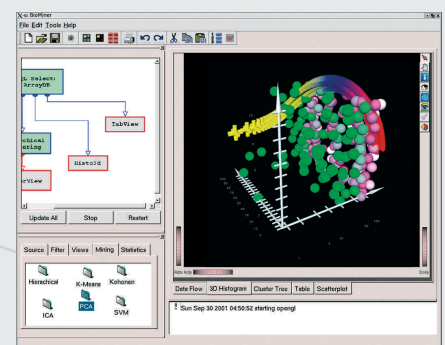


BioMiner Cluster View

BioMiner provides numerous methods of classification (e.g. SVM, SOM, PCA, K means, hierarchical clustering), statistical analysis (e.g. t-test, Man-Whitney-Wilcoxon test, p-value, adaptation for multiples testing, ANOVA methods), pattern matching (e.g. expression profiles, regular expressions) and quality control functions (e.g. standardisation, calibration graphs).

The graphic Workflow Designer enables simple and intuitive data evaluation compilation, storage and reuse as needed. Established data workflows can be stored and used whenever required.

New modules for the BioMiner system ensure that the platform's efficiency is steadily enhanced. BioMiner's open architecture facilitates customisation for individual customer needs and allows problem-free integration into an existing computing environment. Efficient data base interfaces and the option of client-server operation turn the BioMiner into the optimal tool to cope with the flood of molecular biological data.



BioMiner 3D Data View

BioMiner is a registered trademark of MicroDiscovery GmbH.

MicroDiscovery GmbH
Marienburger Straße 1
D - 10405 Berlin
Tel.: +49-(0)30-443 50 90 - 0
Fax.: +49-(0)30-443 50 90 - 10
www.microdiscovery.de

MicroDiscovery

